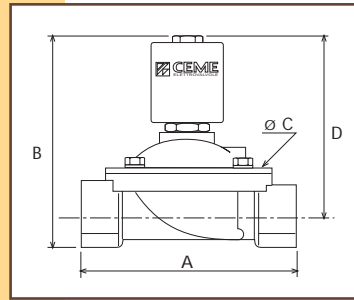


CARATTERISTICHE SPECIFICATIONS

| ATTACCHI<br>PIPES<br>in → out | Ø<br>mm | CODICE<br>CODE | KV<br>m <sup>3</sup> /h | M.O.P.D.<br>bar |    | DIMENSIONI/DIMENSIONS<br>mm |     |     |     | PESO/WEIGHT<br>Kg |
|-------------------------------|---------|----------------|-------------------------|-----------------|----|-----------------------------|-----|-----|-----|-------------------|
|                               |         |                |                         | AC              | DC | A •                         | B • | C • | D • |                   |
| 3/8"                          | 12      | 8413           | 2.20                    | 5               | 5  | 61                          | 105 | 48  | 92  | 0.680             |
| 1/2"                          | 12      | 8414           | 2.20                    | 5               | 5  | 61                          | 105 | 48  | 92  | 0.660             |
| 3/4"                          | 20      | 8415           | 5.50                    | 4               | 2  | 100                         | 110 | 80  | 93  | 1.100             |
| 1"                            | 25      | 8416           | 7.50                    | 4               | 2  | 100                         | 116 | 80  | 96  | 1.200             |
| 1" 1/4                        | 36      | 8417           | 17.50                   | 4               | 2  | 146                         | 200 | 128 | 170 | 5.200             |
| 1" 1/2                        | 39      | 8418           | 19.00                   | 4               | 2  | 146                         | 200 | 128 | 170 | 5.000             |
| 2"                            | 51      | 8419           | 32.40                   | 4               | 2  | 174                         | 216 | 146 | 180 | 6.500             |
| 3/8" NPT                      | 12      | 8423           | 2.20                    | 5               | 5  | 61                          | 105 | 48  | 92  | 0.680             |
| 1/2" NPT                      | 12      | 8424           | 2.20                    | 5               | 5  | 69                          | 105 | 48  | 92  | 0.670             |



CARATTERISTICHE ELETTRICHE ELECTRICAL INFORMATION

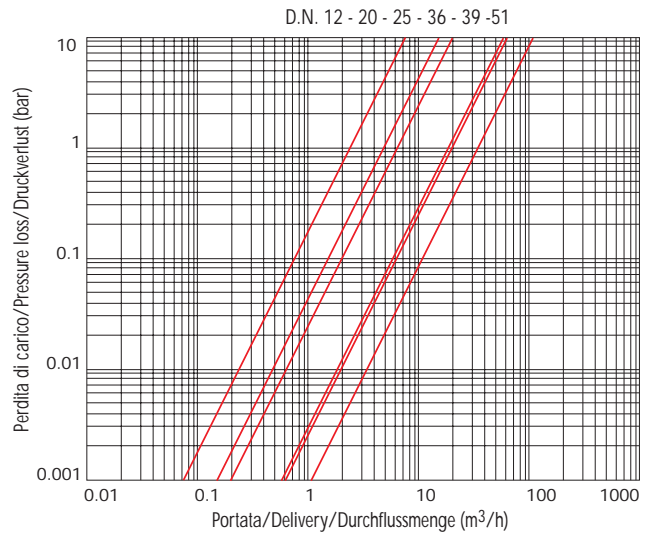
|    |                      | POTENZA/POWER       |                   |                     |                   |       |       |
|----|----------------------|---------------------|-------------------|---------------------|-------------------|-------|-------|
|    |                      | 8413-14-15-16       |                   | 8417-18-19          |                   |       |       |
|    |                      | NOMINALE<br>HOLDING | SPUNTO<br>IN RUSH | NOMINALE<br>HOLDING | SPUNTO<br>IN RUSH |       |       |
| V~ | 12 24 48 110 230 400 | 50                  | 60                | 18VA                | 47VA              | 140VA | 430VA |
| V= | 12 24 48 110         |                     |                   | 14W                 |                   | 43W   |       |

Per dettagli costruttivi sulle bobine vedi capitolo "INFORMAZIONI DI PROGETTO"  
For construction details of the coils see chapter "PROJECT INFORMATION"  
Ausführliche Daten über die Ventilsolenen finden Sie unter Abschnitt "TECHNISCHE INFORMATIONEN"

MAX TEMPERATURA MAX TEMPERATURE

| FLUIDI/FLUIDS |       |          |       | AMBIENTE/AMBIENT |
|---------------|-------|----------|-------|------------------|
| NBR           | EPDM  | EPDM-KTW | FPM   | 80°C             |
| 90°C          | 130°C | 130°C    | 150°C |                  |

DIAGRAMMA PERDITA DI CARICO PRESSURE LOSS DIAGRAM



|                       |                       |                          |
|-----------------------|-----------------------|--------------------------|
| Dado                  | Lock nut              | Mutter                   |
| ondella               | Washer                | Beilagscheibe            |
| Bobina                | Coil                  | Magnetspule              |
| annotto               | Tube guide            | Plungerrohr              |
| O-ring                | O-ring                | O-ring                   |
| ite                   | Screw                 | Schraube                 |
| operchio              | Valve body top        | Deckel                   |
| Molla                 | Spring                | Feder                    |
| nello                 | Ring                  | Ring                     |
| Nucleo mobile         | Plunger               | Plunger                  |
| Molla                 | Spring                | Feder                    |
| iattello              | Support               | Scheibe                  |
| astiglia              | Seal                  | Dichtung                 |
| Molla                 | Spring                | Feder                    |
| Bussola               | Bush                  | Buchse                   |
| Membrana              | Diaphragm             | Membrane                 |
| Bussola               | Bush                  | Buchse                   |
| orpo                  | Valve body base       | Grundkörper              |
| ICAMBI                | SPARE PARTS           | ERSATZTEILE              |
| obina                 | Coil                  | Magnetspule              |
| annotto               | Tube guide            | Plungerrohr              |
| olla                  | Spring                | Feder                    |
| ruppo membrana (C.A.) | Diaphragm unit (A.C.) | Membrane Aggregat (A.C.) |
| ruppo membrana (C.C.) | Diaphragm unit (D.C.) | Membrane Aggregat (D.C.) |

8413  
8414  
8415  
8416  
8823  
8824

8417  
8418  
8419



**ELETTROVALVOLA SERVOASSISTITA 2/2 VIE N.C.**  
**SOLENOID VALVE SERVO-ACTUATED 2/2 WAY N.C.**  
**ZWANGSGESTEUERTES MAGNETVENTIL 2/2 WEGE S.G.**



KTW



**CARATTERISTICHE GENERALI**

**PRESSIONE MINIMA DIFFERENZIALE DI FUNZIONAMENTO** 0 bar  
**PARTI A CONTATTO CON IL FLUIDO**

**TENUTA** NBR a richiesta FPM - EPDM  
 EPDM-KTW tenuta adatta e certificata DVGW per l'intercettazione di acqua potabile

**CORPO** OTTONE

**ORGANI INTERNI** ACCIAIO INOX

**FLUIDI** ACQUA - ARIA - OLII LEGGERI

**VALVOLA UNIDIREZIONALE**

**VALVOLA ISPEZIONABILE**

**VALVOLA FORNITA CON**

**POSIZIONE DI MONTAGGIO**

CONNETTORE TRIPOLARE UNI ISO 4400 (DIN 43650A) - IP65

Si consiglia di montare la valvola con la bobina rivolta verso l'alto. I modelli 8417, 8418, 8419 devono essere installati in posizione orizzontale con bobina rivolta verso l'alto.

**TEMPERATURA AMBIENTE**

80°C, in D.C. per temperature superiori a 40°C, le performance (M.O.P.D.) potrebbero diminuire.

**ESECUZIONI SPECIALI**

VERSIONE ANTI COLPO D'ARIETE CON TEMPO DI CHIUSURA + PIU' LENTO.  
 PER I MODELLI 8415 e 8416 E' DISPONIBILE LA BOBINA B20 (30 W) PER AUMENTARE LA PRESTAZIONE IN D.C. (M.O.P.D.) A 4 BAR.

**GENERAL FEATURES**

**MINIMUM DIFFERENTIAL WORKING PRESSURE:** 0 bar  
**PARTS IN CONTACT WITH THE FLUID**

**SEALING** NBR on request FPM - EPDM  
 EPDM-KTW sealing approved and DVGW certified for interception of potable water

**BODY** BRASS

**INTERNAL PARTS** STAINLESS STEEL

**FLUIDS** WATER- AIR - LIGHT OILS

**ONE WAY DIRECTION VALVE**

**SERVICEABLE VALVE**

**VALVE SUPPLIED WITH**

**MOUNTING POSITION**

THREE POLE PLUG CONNECTOR UNI ISO 4400 (DIN 43650A)-IP65

We advice installation of the valve with the coil vertical. Models 8417,8418,8419 must be mounted in the horizontal position with the coil vertical.

**AMBIENT TEMPERATURE**

80°C, in D.C. for temperatures higher than 40°C, the performances (M.O.P.D.) could decrease.

**SPECIAL EXECUTIONS**

VERSION WITH WATER HAMMER DEVICE FOR SLOWER CLOSING TIME  
 FOR MODELS 8415 AND 8416, COIL TYPE B20 (30 W) IS AVAILABLE TO INCREASE PERFORMANCES (M.O.P.D.) IN D.C. TO 4 BAR.

**ALLGEMEINE MERKMALE**

**MINIMALER DIFFERENTIALARBEITSDRUCK** 0 bar  
**MEDIUMS BERUEHRTE TEILE**

**DICHTUNG** NBR auf Nachfrage FPM - EPDM  
 EPDM-KTW Dichtung DVGW-KTW zertifiziert fuer den Trinkwassereinsatz.

**KOERPER** MESSING

**INNERE ELEMENTE** EDELSTAHL

**MEDIEN** WASSER - LUFT- LEICHTE OELE

**UNIDIREKTIONALES VENTIL**

**VENTIL WARTUNGSFREUNDLICH**

**LIEFERUMFANG**

**MONTAGEPOSITION**

DREIPOLIGER STECKER UNI ISO 4400 (DIN 43650A)-IP65

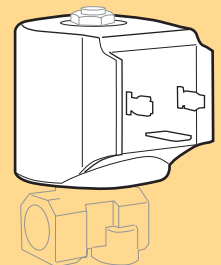
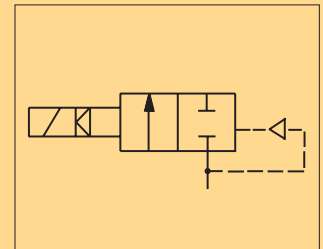
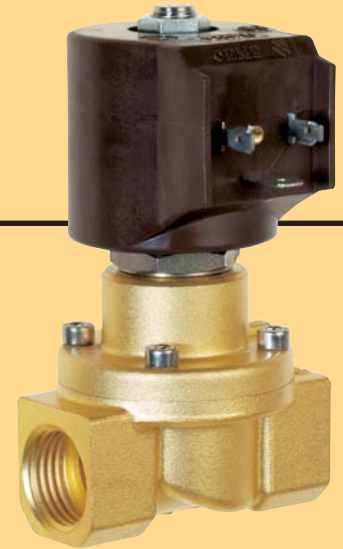
Es wird empfohlen das Ventil mit der Spule senkrecht nach oben einzubauen.

Die Modelle 8417,8418,8419 muessen mit der Spule senkrecht nach oben eingebaut werden.  
 80°C, im D.C.- Betrieb koennen Temperaturen ueber 40°C, die Schaltkraefte (M.O.P.D.) des Ventils beeintraechtigen.

**UMGEBUNGSTEMPERATUR**

**SONDERAUSFUEHRUNGEN**

AUSFUEHRUNG LANGSAM SCHLIESSEND  
 FUER DIE MODELLE 8415 UND 8416 IST DIE SPULE B20 (30 W) VERFUEGBAR UM DIE SCHALTKRAEFTE (M.O.P.D.) IN D.C. AUF 4 BAR ZU ERHOEHEN.

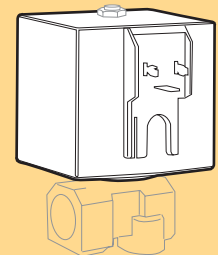


**8413-8414-8415-8416-8423-8424**

**BOBINA TIPO B12**

**COIL TYPE B12**

**SPULE TYP B12**



**8417-8418-8419**

**BOBINA TIPO B60**

**COIL TYPE B60**

**SPULE TYP B60**

**serie 84**