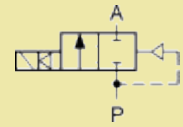




**Model B26 G1 DN25**



[WWW.GAS-AS.CZ](http://WWW.GAS-AS.CZ)

Ports	Orifice size [mm]	Flow coefficient Kv [l/min] water (p = 1 bar)	Differential pressure [bar]		Material		Mass [kg]	Coil type	Model	Voltage	Power [W]	Order code
			min	max	body	seal						
G1	25	180	1	18	Brass	PTFE	1.51	TM30	B26	230/AC	7	<b>316401</b>
										115/AC	10	<b>316403</b>
										48/AC	7	<b>316405</b>
										24/AC	7	<b>316407</b>
										24/DC	7	<b>316409</b>

