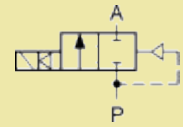




WWW.GAS-AS.CZ

Model B27 G1/2 DN10



Ports	Orifice size [mm]	Flow coefficient Kv [l/min]	Differential pressure [bar]		Material		Mass [kg]	Coil type	Model	Voltage	Power [W]	Order code
			water (p = 1 bar)	min	max	body						
G1/2	10	42	0.3	50	Brass	PA	0.43	TM30	B27	230/AC	10	316595
										115/AC	10	316592
										24/AC	10	316594
										24/DC	10	316593
										12/DC	10	316596
G1/2	10	42	0.3	50	Brass	PTFE	0.43	TM30	B27	230/AC	10	316600
										115/AC	10	316602
										48/AC	10	316604
										24/AC	10	316606
										24/DC	12	316608

