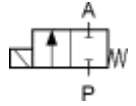


**HIGH PRESSURE SERVICE DIRECT ACTING SOLENOID VALVES**  
**Type D22N 1/4"**



Ports	Orifice size [mm]	Flow coefficient Kv [l/min] water (p = 1 bar)	Differential pressure [bar]		Material		Mass [kg]	Coil type	Valve type	Voltage	Power [W]	Order code
			min	max	body	seal						
G1/4	0.9	0.48	0	400	INOX	PU	0.52	TM35	<b>D22N</b>	230/AC	18	<b>320852</b>
	1	0.6	0	350	INOX	PU	0.52	TM35	<b>D22N</b>	230/AC	18	<b>320841</b>
	1.2	0.75	0	250	INOX	PU	0.52	TM35	<b>D22N</b>	230/AC	18	<b>320756</b>
	1.4	0.85	0	200	INOX	PU	0.52	TM35	<b>D22N</b>	230/AC	18	<b>320762</b>
	2	1.8	0	150	INOX	PU	0.52	TM35	<b>D22N</b>	230/AC	18	<b>320816</b>
	2.3	1.9	0	100	Brass	PU	0.52	TM35	<b>D22</b>	230/AC	18	<b>320886</b>

**Air and gas service only. Other fluids on request.**

