

# Skillair® 400 FILTER

Filter with different degrees of impurity treatment and high performance:

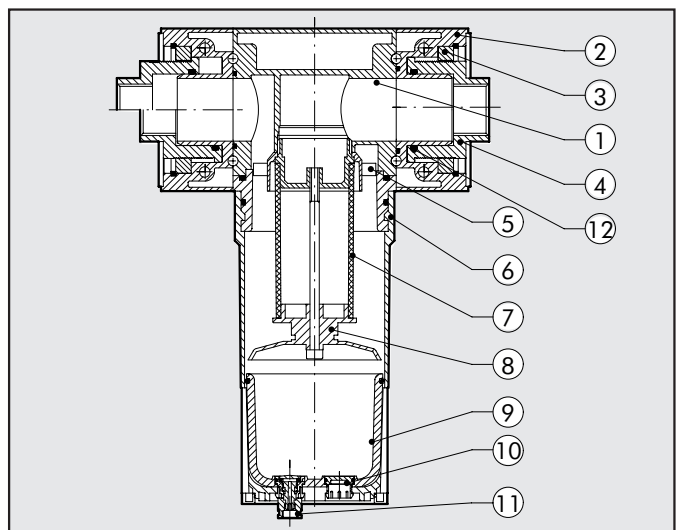
- minimum load loss with changes in flow rate
- maximum degree of condensate separation
- 360° condensate level display
- semi-auto or auto condensate drain

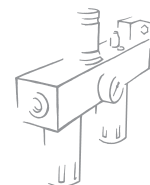


TECHNICAL DATA	FIL 400			
	G1"	G1"1/4"	G1"1/2	G2"
Threaded port	G1"	G1"1/4"	G1"1/2	G2"
Degree of filtration		5µm 20µm 50µm		5µm 20µm 50µm
Max. input pressure	MPa	1.3		1.3
	bar	13		13
	psi	188		188
Flow rate at 6 bar (0.6 MPa-87 psi)	NI/min	16500		20000
ΔP 0.5 bar (0.05 MPa – 7 psi)	scfm	590		710
Fluid		Compressed air		Compressed air
Max temperature at 1 MPa; 10 bar; 145 psi	°C	50		50
	°F	122		122
Weight	Kg	5.2		6
Wall fixing screws		M6x110		M6x110
Mounting position		Vertical		Vertical
Drain		Manual/semi-auto (RMSA) Automatic (RA)		Manual/semi-auto (RMSA) Automatic (RA)
Bowl capacity	cm <sup>3</sup>	270		270
Notes on use	Series 400 end plates come with a patented system with a rotary sliding end joint to allow the unit to be adapted to the pipe cutting distance (see page 3.1/03).			

## COMPONENTS

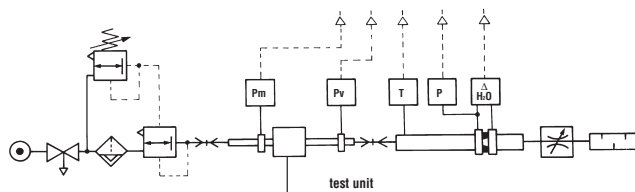
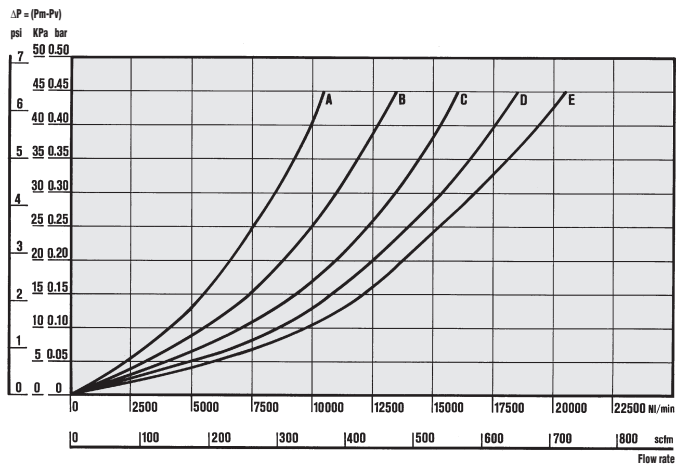
- ① Aluminium body
- ② Aluminium end plate
- ③ OT58 brass retaining ring
- ④ OT58 threaded bush, axial adjustment
- ⑤ Technopolymer centrifuge
- ⑥ Aluminium bowl
- ⑦ Sintered bronze filter cartridge
- ⑧ Aluminium screen
- ⑨ Clear technopolymer glass
- ⑩ Technopolymer plug
- ⑪ Drain (RMSA)
- ⑫ NBR gaskets





## FLOW CHARTS

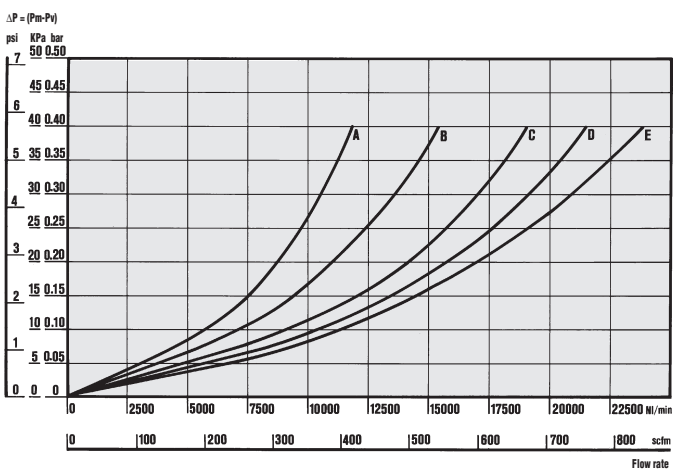
### FIL 400 1''



• Flow tests carried out at the Department of Mechanics, Turin Polytechnic, using the computerized test bench following CETOP RP50R recommendations (ISO DIS 6358-2-approved) with ISO 5167 diaphragm gauge.

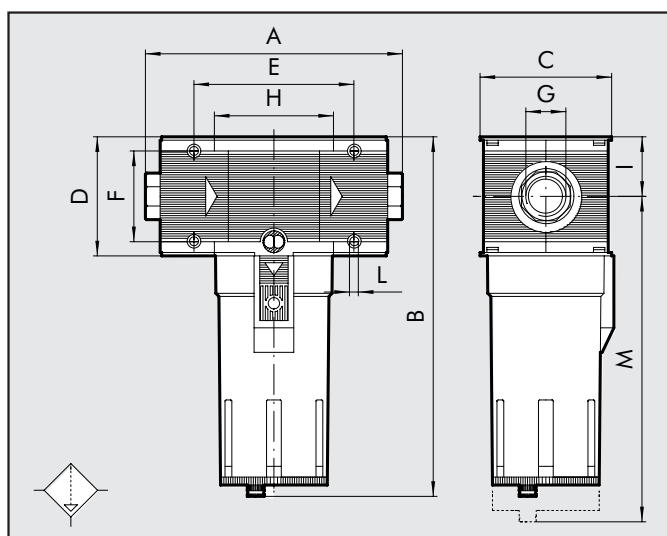
- (A) = 2 bar - 0,2 MPa - 29 psi
- (B) = 4 bar - 0,4 MPa - 58 psi
- (C) = 6 bar - 0,6 MPa - 87 psi
- (D) = 8 bar - 0,8 MPa - 116 psi
- (E) = 10 bar - 1 MPa - 145 psi

### FIL 400 2''



3

## DIMENSIONS



	FIL 400	FIL 400	FIL 400	FIL 400
Threaded port	G 1''	G 1''1/4	G 1''1/2	G 2''
A		225÷255		283÷313
B			320	
C			116	
D			105	
E			141.4	
F			80	
G	G 1''	G 1''1/4	G 1''1/2	G 2''
H			105.4	
I			52.5	
L			M6 hole	
M			378	